

HUDSON™



**Competitively priced, quality products for sectioning,
mounting, grinding and polishing applications.**

T A B L E S

Grain Size Conversions

USA Grit Sizes	FEPA European P-Series	Nominal Grain Diameter Microns	USA Grit Sizes	FEPA European P-Series	Nominal Grain Diameter Microns
60	60	260	400	800	22
80	80	200	—	1000	18
120	120	125	600	1200	14
150	—	93	800	2400	10
180	180	76	1000	3000	7
220	—	68	1200	4000	5
—	220	58			3
240	280	52			1
—	320	46			.05
280	360	39			.03
320	400	35			0.25
—	500	30			0.1
360	600	26			0.05

Weight

1 Ounce	.0625 lb.	28.3495 gr.	28349.5 mg.	0.0283495 kg.
1 Pound	16 oz.	453.592 gr.	453592 mg.	0.453592 kg.
1 Gram	0.035274 oz.	0.00220462 lb.	1000 mg.	0.001 kg.
1 Milligram	0.000035274 oz.	0.0000022046217 lb.	0.001 gr.	0.000001 kg.
1 Kilogram	35.274 oz.	2.20462 lb.	1000 gr.	1000000 mg.

Length

1 Inch	0.0833333 ft.	0.0277778 yd.	25.4 mm.	2.54 cm.	0.0254 m.
1 Foot	12 in.	0.333333 yd.	304.8 mm.	30.48 cm.	0.3048 m.
1 Yard	36 in.	3 ft.	914.4 mm.	91.44 cm.	0.9144 m.
1 Millimeter	0.0393701 in.	0.00328084 ft.	0.00109361 yd.	0.1 cm.	0.001 m.
1 Centimeter	0.393701 in.	0.0328084 ft.	0.0109361 yd.	10 mm.	0.01 m.
1 Meter	39.3701 in.	3.28084 ft.	1.09361 yd.	1000 mm.	100 cm.

Volume

1 Ounce	0.0625 pt.	0.03125 qt.	0.0078125 gl.	29.5735 ml.	0.0295735 l.
1 Pint	16 oz.	0.5 qt.	0.125 gl.	473.177 ml.	0.473177 l.
1 Quart	32 oz.	2 pt.	0.25 gl.	946.353 ml.	0.946353 l.
1 Gallon	128 oz.	8 pt.	4 qt.	3785.41 ml.	3.78541 l.
1 Milliliter	0.033814 oz.	0.00211338 pt.	0.00105669 qt.	0.000264172 gl.	0.001 l.
1 Liter	33.814 oz.	2.11338 pt.	1.05669 qt.	0.264172 gl.	1000 ml.

Welcome to HUDSON

We look forward to servicing your needs with the highest quality and most competitive prices. HUDSON means competitively priced quality!

Many of you know us well and are our valued customers whose continued support and business makes us an industry favorite.

For those who don't know us, we are pleased to introduce and present the latest edition of HUDSON consumables.

The products found in this catalog are specific to your industry. We can assure you that we have assembled the most complete and fairly priced line of products that you will find anywhere.

Our customer service and sales staff are able to help you every step of the way.

Guarantee

Customer Satisfaction is very important to us. Our products and services are 100% guaranteed. If you are not satisfied you may return any unused product, except special order items for a refund or credit within 30 days of the shipping date.

Terms

With approved credit all invoices carry 1% 10, net 30 terms. Or we accept  

Credit

Credit may be obtained by faxing or sending the name of your company, bank, and three trade references to our Credit Manager.

Minimum Order Value

In some cases, orders may be subject to a minimum order of \$50.00.

Prices

All prices and discounts are subject to change without notice.

Freight

All orders will be shipped by the carrier of our choice unless otherwise specified. All shipments are F.O.B: Cleveland, OH 44128-2959. Certain hazardous materials require additional shipping charges.

Overshipments and Undershipments

On rare occasions, it is possible that we will have fewer or greater items available for your shipment. We reserve the right to overship or undership by 10%.

Agreements

All agreements including the sale of our products are made contingent upon strikes, fires, accidents, and other delays beyond our control. We will not accept responsibility for shortages that are not reported to us within 15 days of an order's ship date.

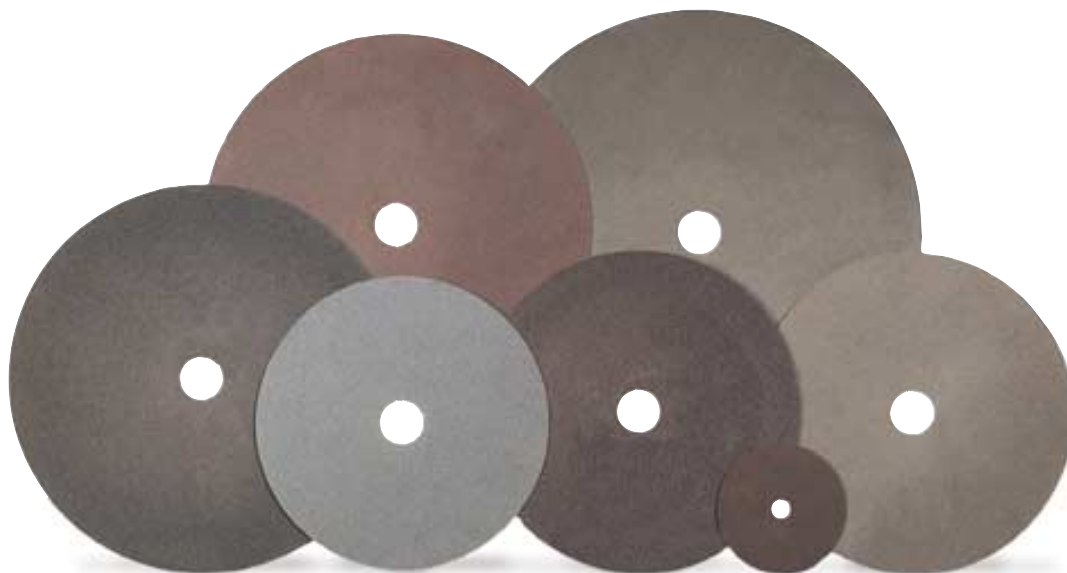
Returns

All returns must be approved by Customer Service and may require an RGA#. If you have a problem, call Customer Service for instructions. A restocking charge of 20% may apply in some cases. All returns must be sent freight prepaid.

Table of Contents

Abrasive Belts	14	Diamond Discs	15	Mounting Materials	8
Abrasive Cut-Off Wheels	3	Diamond Extenders	19	Mounting Compounds	9
Abrasive Discs	12	Diamond Sprays	19	Mounting Supplies	11
Abrasive Rolls	14	Diamond Suspensions	20	Mounting Systems	9
Abrasive Sheets	14	Diamond Wafering & Cut-Off Blades	6	Phenolic Preforms	8
Abrasive Strips	14	Dressing Sticks	5	Pillar Testing Files	26
Adhesive Remover	13	Grit Grabbers	13	Polishing Cloths	21
Alumina Powders	17	Hardness Test Blocks/Ball		Polaroid Film & Holders	25
Beakers	26	Penetrators/Diamond Indentors	26	Polaroid Camera	25
Chemicals & Solutions	26	Hudpolish	17	Quickmount	9
Compression Molding Powders	8	Koldmount	10	Silicone Mold Release Spray	8
Coolant/Rust Free Inhibitor	5	Lapping Films	16	Slurry	17
Diamond Compounds	18	Latex Gloves	26	Ultra Sonic Cleaning Solution	26

Abrasive Cut-Off Wheels



Technical Information and Cross Referencing.

This catalog lists our most frequently chosen wheels. We will be able to help you make the very best choice for your operation. Our knowledgeable staff will be pleased to assist you in choosing a wheel that meets your general purpose or very specific needs. Please contact customer service for further information.

Small Diameter Abrasive Cut-Off Blades

RECOMMENDED USE	TYPE/ BOND	SIZE	PART NO.	PRICE/EACH 10/PACK
Rc55 Plus	A/O R	4" X .010" X 1/2"	CF04011	XXXX
		4" X .030" X 1/2"	CF04020	XXXX
		6" X .025" X 5/8"	CF06014	XXXX
		7" X .030" X 1/2"	CF07028	XXXX
Rc40 Range	S/C R	4" X .012" X 1/2"	CF04010	XXXX
Soft Non-Ferrous, Aluminum, Brass		6" X .025" X 1/2"	CF06013	XXXX

9" Diameter By 1-1/4" Arbor

9" X 1-1/4"

RECOMMENDED USE	TYPE/ BOND	THICKNESS	PART NO.	PRICE/EACH 25/PACK	PRICE/EACH 150/PACK	PRICE/EACH 500/PACK.
Hard Steels Rc45-60 (Our most popular grade)	A/O	1/16" (.063")	CF09200	XXXX	XXXX	XXXX
Medium Steels Rc25-50			CF09500	XXXX	XXXX	XXXX
Soft or Annealed Steels Rc15-35, Rb46-90			CF09600	XXXX	XXXX	XXXX
Delicate Cutting (Ultra Thin Blade)	R	1/32" (.032")	CF09700	XXXX	XXXX	XXXX
Dry Cutting of Soft Material	A/O	.078"	CF09725	XXXX	XXXX	XXXX
Tool Steels Rc60 & Above Carburized Steels		.070"	CF09920	XXXX	XXXX	XXXX
Tool Steels Rc55-60 & Carburized Steels		.075"	CF09911	XXXX	XXXX	XXXX
Hard Steels Rc50		RR	.070"	CF09900	XXXX	XXXX
Medium Hard Steels Rc35-50	S/C R	.070"	CF09800	XXXX	XXXX	XXXX
Hard Non-Metallics, Glass, Rocks, and Other Hard Materials		CF09750	XXXX	XXXX	XXXX	
Medium Hard Non-Ferrous Materials, Titanium, Zirconium		CF09775	XXXX	XXXX	XXXX	
Soft Non-Ferrous Materials, Aluminum, Brass, etc.		CF09060	XXXX	XXXX	XXXX	

A/O = Aluminum Oxide S/C = Silicon Carbide R = Rubber Bonded RR = Resin Rubber Bonded

10" Diameter By 1-1/4" Arbor

10" X 1-1/4"

RECOMMENDED USE	TYPE/ BOND	THICKNESS	PART NO.	PRICE/EACH 25/PACK	PRICE/EACH 150/PACK	PRICE/EACH 500/PACK
Hard Steels: Rc45-60 (Our Most Popular Grade)	A/O R	1/16" (.063")	CF10200	XXXX	XXXX	XXXX
		.093"	CF10021	XXXX	XXXX	XXXX
Medium Steels Rc25-50		1/16" (.063")	CF10500	XXXX	XXXX	XXXX
Soft or Annealed Steel Rc15-35, Rb46-90		1/16" (.063")	CF10600	XXXX	XXXX	XXXX
Delicate Cutting (Ultra Thin Blade)		.040"	CF10080	XXXX	XXXX	XXXX
Dry Cutting of Soft Material		.078"	CF10085	XXXX	XXXX	XXXX
Tool Steels Rc60 & Above Carburized Steels	A/O RR	.075"	CF10038	XXXX	XXXX	XXXX
Tool Steels Rc55-60 & Carburized Steels			CF10030	XXXX	XXXX	XXXX
Hard Steels Rc50			CF10034	XXXX	XXXX	XXXX
Medium Hard Steels Rc35-50			CF10020	XXXX	XXXX	XXXX
Hard Non-Metallics, Glass, Rocks, and Other Hard Materials.	S/C R	1/16" (.063")	CF10055	XXXX	XXXX	XXXX
Medium Hard Non-Ferrous Materials, Titanium, Zirconium			CF10058	XXXX	XXXX	XXXX
Soft Non-Ferrous Materials, Aluminum, Brass, etc.			CF10060	XXXX	XXXX	XXXX

10" Diameter By 5/8" Arbor

10" X 5/8"

RECOMMENDED USE	TYPE/ BOND	THICKNESS	PART NO.	PRICE/EACH 25/PACK	PRICE/EACH 150/PACK	PRICE/EACH 500/PACK
Hard Steels Rc45-60 (Our Most Popular Grade)	A/O	1/16" (.063")	CF10300	XXXX	XXXX	XXXX
Soft or Annealed Steels Rc15-35, Rb46-90	R	1/16" (.063")	CF10040	XXXX	XXXX	XXXX

12" Diameter By 1-1/4" Arbor

12" X 1-1/4"

RECOMMENDED USE	TYPE/ BOND	THICKNESS	PART NO.	PRICE/EACH 25/PACK	PRICE/EACH 150/PACK	PRICE/EACH 500/PACK
Hard Steels Rc45-60 (Our Most Popular Grade)	A/O R	1/16" (.063")	CF12200	XXXX	XXXX	XXXX
Medium Steels Rc25-50			CF12500	XXXX	XXXX	XXXX
Soft or Annealed Steels Rc15-35, Rb46-90			CF12018	XXXX	XXXX	XXXX
Delicate Cutting (Ultra Thin Blade)		.045"	CF12700	XXXX	XXXX	XXXX
Dry Cutting of Soft Material		.078"	CF12033	XXXX	XXXX	XXXX
Tool Steels Rc 55-60 and Carburized Steels	A/O RR	.100"	CF12026	XXXX	XXXX	XXXX
Medium Hard Steels Rc35-50			CF12600	XXXX	XXXX	XXXX
Hard Non-Metallics, Glass, Rocks, and Other Hard Materials.	S/C R	1/16" (.063")	CF12040	XXXX	XXXX	XXXX
Medium Hard Non-Ferrous Materials, Titanium, Zirconium			CF12063	XXXX	XXXX	XXXX
Soft Non-Ferrous Materials, Aluminum, Brass, etc.			CF12060	XXXX	XXXX	XXXX

12" Diameter By 1-3/8" Arbor

12" X 1-3/8"

RECOMMENDED USE	TYPE/ BOND	THICKNESS	PART NO.	PRICE/EACH 25/PACK	PRICE/EACH 150/PACK	PRICE/EACH 500/PACK
Super Ferrous Alloys Above Rc50	A/O	.100"	CF12016	\$9.90	\$8.90	\$7.90
Super Ferrous Alloys Below Rc50			CF12800	\$7.90	\$6.60	\$5.90
Non-Ferrous Materials			CF12070	\$7.80	\$7.00	\$6.30

A/O = Aluminum Oxide S/C = Silicon Carbide R = Rubber Bonded RR = Resin Rubber Bonded

14" Diameter By 1-1/4" Arbor

14" X 1-1/4"

RECOMMENDED USE	TYPE/ BOND	THICKNESS	PART NO.	PRICE/EACH 25/PACK	PRICE/EACH 150/PACK	PRICE/EACH 500/PACK
Hard Steels Rc45-60 (Our Most Popular Grade)	A/O R	1/16" (.063")	CF14200	XXXX	XXXX	XXXX
Medium Steels Rc25-50			CF14065	XXXX	XXXX	XXXX
Soft or Annealed Steels Rc15-35, Rb46-90		.090"	CF14063	XXXX	XXXX	XXXX
		1/16" (.063")	CF14012	XXXX	XXXX	XXXX
Tool Steels Rc55-60 & Carburized Steels	A/O RR	3/32"	CF14016	XXXXX	XXXX	XXXX
Soft Non-Ferrous Materials, Aluminum, Brass, etc.	S/C RR	1/16" (.063")	CF14060	XXXX	XXXX	XXXX

16" Diameter By 1" Arbor

16" X 1"

RECOMMENDED USE	TYPE/ BOND	THICKNESS	PART NO.	PRICE/EACH 25/PACK	PRICE/EACH 150/PACK	PRICE/EACH 500/PACK
Hard Steels Rc45-60, with 1" Drive & Radial Holes	A/O R	3/32" (.093")	CF16300	XXXX	XXXX	XXXX
Hard Steels Rc45-60, with 1" Drive & 3 Radial Holes		1/8" (.125")	CF16008	XXXX	XXXX	XXXX



For use with
our abrasive
cut-off wheels!

HUDSON Blue Coolant Nitrite-Free Rust Inhibitor For Abrasive Saws

DESCRIPTION	QUANTITY	PART NO.	PRICE/EACH
Soluble Oil Concentrate for Cut-Off Saws	1 Gallon	CL-BL1G	XXXX
	4 or more Gal.		XXXX

Dressing Sticks

For Abrasive, Metal Bond & Resin Bond Diamond Cut-Off Wheels

DESCRIPTION	QUANTITY	PART NO.	PRICE/EACH
1/2" X 1" X 3"	1	DRST	XXXX

A/O = Aluminum Oxide S/C = Silicon Carbide R = Rubber Bonded RR = Resin Rubber Bonded

Diamond Wafering & Cut-Off Blades



Applications and Recommendations

Bond System Summary	Concentrations: HIGH or LOW
<p>Electroplated - Consists of a single layer of abrasive on a solid steel core. It is very aggressive and works well with composite materials such as ceramics, glass, sapphire, and rock. It has a limited life due to the single layer of abrasive.</p>	<p>Electroplated - Not Applicable</p>
<p>Metal Bond (MB) - Is a hard bond, which is required when cutting aggressive materials such as ceramics, refractories, glass, and rock. Metal Bond has a depth of abrasive generally 1/8".</p>	<p>Metal Bond (MB) - A low concentration of abrasive is favored to allow the blade to cut more freely. High concentrations are required when cutting aggressive materials such as ceramics.</p>
<p>Resin Bond (RB) - Is a softer, more forgiving bond matrix. Resin Bond is effective when cutting harder, denser materials like carbide. A better finish can be achieved than with the electroplated or metal bond wheels.</p>	<p>Resin Bond (RB) - A high concentration product is the most common. Low concentration products are recommended where a large area of contact is necessary. Generally, all cutting and slicing operations use high concentration.</p>

Diamond Wafering Blades

SIZE	METAL BOND - LOW		METAL BOND - HIGH	
	PART NO.	PRICE	PART NO.	PRICE
3" x .006" x 1/2"	DB3L	XXXX	DB3H	XXXX
4" x .012" x 1/2"	DB4L	XXXX	DB4H	XXXX
5" x .015" x 1/2"	DB5L	XXXX	DB5H	XXXX
6" x .020" x 1/2"	DB6L	XXXX	DB6H	XXXX



HUDECON Economy Electroplated Diamond Wafering Blades

With 1/2" Center Hole

SIZE	CORE THICKNESS	RIM	CORE	
			PART NO.	PRICE
4"	.004"	.012"	DBE0410	XXXX
4"	.012"	.022"	DBE0420	XXXX
6"	.012"	.022"	DBE0620	XXXX
6"	.025"	.033"	DBE0630	XXXX

With 5/8" Center Hole

SIZE	CORE THICKNESS	RIM	CORE	
			PART NO.	PRICE
4"	.004"	.012"	DBE0430	XXXX
4"	.012"	.022"	DBE0440	XXXX
6"	.025"	.033"	DBE0660	XXXX
8"	.025"	.035"	DBE0840	XXXX

Additional Diamond Wafering and Cut-Off Blades

SIZE	ELECTROPLATED		METAL BOND - LOW		METAL BOND - HIGH	
	PART NO.	PRICE	PART NO.	PRICE	PART NO.	PRICE
5" x .020"	DB5500*	XXXXX	DB5505*	XXXXX	DB5510*	XXXXX
6" x .025"	DB6400*	XXXXX	DB6405*	XXXXX	DB6410*	XXXXX
7" x .020"	DB7000*	XXXXX	DB7005*	XXXXX	DB7010*	XXXXX
7" x .025"	DB7500*	XXXXX	DB7505*	XXXXX	DB7510*	XXXXX
8" x .025"	DB8200*	XXXXX	DB8205*	XXXXX	DB8210*	XXXXX
8" x .032"	DB8400*	XXXXX	DB8405*	XXXXX	DB8410*	XXXXX
10" x .050"	DB1500*	XXXXX	DB1505*	XXXXX	DB1510*	XXXXX
10" x .060"	DB1700*	XXXXX	DB1705*	XXXXX	DB1710*	XXXXX

SIZE	RESIN BOND - LOW		RESIN BOND - HIGH	
	PART NO.	PRICE	PART NO.	PRICE
6" x .025"	DB6415*	XXXXX	DB6420*	XXXXX
6" x .032"	DB6615*	XXXXX	DB6620*	XXXXX
6" x .050"	DB6815*	XXXXX	DB6820*	XXXXX
7" x .025"	DB7515*	XXXXX	DB7520*	XXXXX
8" x .045"	DB8615*	XXXXX	DB8620*	XXXXX
8" x .055"	DB8815*	XXXXX	DB8820*	XXXXX
10" x .050"	DB1515*	XXXXX	DB1520*	XXXXX
10" x .060"	DB1715*	XXXXX	DB1720*	XXXXX

* Add the following numbers listed below to the part number to specify the desired center holes:

1/2" -1 5/8" -2
 3/4" -3 1" -4
 1-1/4" -5" 1-3/8" -6

For example, the correct part number for an Electroplated 6" x .025" x 3/4" is **DB6400-3**

Mounting Materials

Compression Molding Powders



DESCRIPTION	QUANTITY	PART NO.	PRICE
Black Phenolic	5 lbs.	MPB	XXXX
	50 lbs.	MPB-50*	XXXXX
Red Phenolic	5 lbs.	MPR	XXXX
	50 lbs.	MPR-50*	XXXXX
Green Phenolic	5 lbs.	MPG	XXXX
	50 lbs.	MPG-50*	XXXXX
Brown Phenolic	5 lbs.	MPBROWN	XXXX
	50 lbs.	MPBROWN-50*	XXXXX
Brown/Green Phenolic	5 lbs.	MPBG	XXXX
	50 lbs.	MPBG-50*	XXXXX
Blue Diallyl Phthalate-Mineral	5 lbs.	MPBDAPM	XXXX
	50 lbs.	MPBDAPM-50*	XXXXX
Blue Diallyl Phthalate-Glass	5 lbs.	MPBDAPG	XXXX
	50 lbs.	MPBDAPG-50*	XXXXX
Transparent Acrylic Thermoplastic	5 lbs.	MPTTP	XXXX
	50 lbs.	MPTTP-50*	XXXXX
Black Epoxy	5 lbs.	MPBE3	XXXX
	50 lbs.	MPBE3-50	XXXXX
Conductive Epoxy-Copper	1 lbs.	MPBECON	XXXX
	5 lbs.	MPBECON-5	XXXXX

*Sold in two 25 lb. containers.

Phenolic Preforms 500 per pack



COLOR	DIAMETER	PART NO.	PRICE/EACH	PRICE/EACH	PRICE/EACH
			1 PACK	2 PACKS	3 PACKS
Black	1-1/4"	PFB2	XXXX	XXXX	XXXX
	1-1/2"	PFB3	XXXXX	XXXX	XXXX
Red	1-1/4"	PFR2	XXXX	XXXX	XXXX
	1-1/2"	PFR3	XXXXX	XXXX	XXXX
Green	1-1/4"	PFG2	XXXX	XXXX	XXXX
	1-1/2"	PFG3	XXXXX	XXXX	XXXX

Silicone Mold Release Aerosol Spray For Hot Mounting

Mold Release Spray For Hot Mounting is a dual blend of highly efficient release agents. It is a universal mold release whose active release agents are formulated to provide more releases per application. Do not allow temperature to exceed 120° Fahrenheit.



SIZE	PART NO.	PRICE
18 ounce spray can*	SMR-18	XXXX

* No air shipments

HUDSON molding powders for encapsulation will not distort your sample

Phenolics

- variety of colors
- fast
- economical
- easily used
- high shrinkage
- low edge retention
- low hardness

Diallyls

- blue to blue green in color
- high hardness
- medium shrinkage
- good edge retention
- chemically resistant

Epoxies

- black in color
- good edge retention
- high hardness
- chemically resistant

Acrylics

- transparent
- slow cure
- require low pressure
- medium hardness
- not chemically resistant

Mounting Systems

HUDSON offers a variety of cold mounting systems, both proprietary and industry standards. The chart below has been provided for your quick referencing.

Two-Part Castable Mounting Compounds

NAME	TEMP. - DEGREES FAHRENHEIT	HARDNESS	APPROX. CURE TIME	SHELF LIFE	COLOR	GENERAL INSTRUCTIONS	COMMENTS
Quickmount (Acrylic)	175°	15-20 Rockwell R	30 Minutes	6 Months	Milky White Translucent	Mix 2 parts powder 1 part liquid	Dissolves in Acetic Acid Rapid Cure Strong Odor Moderate Hardness
Koldmount (Acrylic)	275°	14-18 Rockwell R	30 Minutes	1 Year	Translucent	Mix 5 parts powder 3 parts liquid	
<i>HUDSON</i> Polyester	250°	18-22 Rockwell R	15-30 Minutes	1 Year	Translucent	Mix 50 parts resin to 1 part hardener	Mild Odor
<i>HUDSON</i> Epoxy	160°	26-28 Rockwell R	6-8 Hours	1 Year	Clear	Mix 8 parts resin to 1 part hardener	Low Shrinkage Slow Cure Solvent Resistant
<i>HUDSON</i> Conductive Epoxy	150° - 250°	Shore D85	4 Hours	1 Year	Black	Mix 1 part resin to 1 part hardener	Nickel Conductive Mount for SEM

Quickmount

Powder-Liquid System.

Mix two-parts powder to one-part liquid.

DESCRIPTION	QUANTITY	PART NO.	PRICE
Quickmount Powder & Liquid Kits	2 Lb. Kit (2 Lb. (908 Gm) & 24 Oz. (710 cc))	QMK02	XXXX
	5 Lb. Kit (5 Lb. (2.27 Kg) & 60 Oz. (1.78 Ltr.))	QMK05	XXXX
	25 Lb. Kit (25 Lb. (11.4 Kg) & 300 Oz. (8.88 Ltr.))	QMK25	XXXXX
	50 Lb. Kit (50 Lb. (22.7 Kg) & 600 Oz. (17.75 Ltr.))	QMK50	XXXXX
Quickmount Powder Only	2 Lb. (908 Gm)	QMP01	XXXX
	5 Lb. (2.27 Lb.)	QMP05	XXXX
Quickmount Liquid Only	12 Oz. (355 cc)	QML012	XXXX
	30 Oz. (888 cc)	QML030	XXXX

Koldmount

Powder-Liquid System.

Mix five-parts powder to three-parts liquid.

DESCRIPTION	QUANTITY	PART NO.	PRICE
Koldmount Powder and Liquid Kits	1 Lb. Kit =1 Lb. (454 Gm) & 12 Oz. (355 cc)	KMK3337	XXXX
	5 Lb. Kit = 5 Lb. (2.27 Kg) & 60 Oz. (1.78 Ltr.)	KMK3338	XXXXX
	10 Lb. Kit =10 Lb. (4.54 Kg) & 120 Oz. (3.55 Ltr.)	KMK3339	XXXXX
	25 Lb. Kit = 25 Lb. (11.4 Kg) & 300 Oz. (8.88 Ltr.)	KMK3340	XXXXX
	50 Lb. Kit =50 Lb. (22.7 Kg) & 600 Oz. (17.75 Ltr.)	KMK3341	XXXXXXX
Koldmount Powder Only	1 Lb. (454 Gm)	KMP3342	XXXX
	5 Lb. (2.27 Kg)	KMP3343	XXXXX
	10 Lb. (4.54 Kg)	KMP3344	XXXXX
	25 Lb. (11.4 Kg)	KMP3344-A	XXXXX
	50 Lb. (22.7 Kg)	KMP3345	XXXXXXX
Koldmount Liquid Only	12 Oz. (355 cc)	KML3346	XXXX
	30 Oz. (888 cc)	KML3347	XXXX

HUDSON Polyester

Two-Part Liquid Polyester Mounting Compound.

Mix fifty-parts of resin to one part of hardener.

DESCRIPTION	QUANTITY	PART NO.	PRICE
HUDSON Polyester Kit	1 Qt. Resin (.95 Ltr.), 1 Oz. Hardener (30 cc)	HP10	XXXX
HUDSON Polyester Resin	1 Gallon Resin (3.8 Ltr.)	HP40	XXXX
HUDSON Polyester Hardener	16 Oz. Hardener (120 cc)	HP60	XXXX

HUDSON Epoxy

Two-Part Liquid Epoxy Compound.

Mix eight-parts of resin to one part of hardener.

DESCRIPTION	QUANTITY	PART NO.	PRICE
HUDSON Epoxy Kit Small	1 Qt. Resin (.95 Ltr.), 8 oz. Hardener (180 cc)	HE10	XXXX
HUDSON Epoxy Kit Large	1 Qt. Hardner (.95 Ltr.), 1 Gallon Resin (3.8 Ltr.)	HE20	XXXXX
HUDSON Epoxy Resin	1 Gallon Resin (3.8 Ltr.)	HE40	XXXX
HUDSON Epoxy Hardener	1 Qt. Hardener (.95 Ltr.)	HE60	XXXX

HUDSON Conductive Epoxy

Two-Part Liquid Nickel-Filled Compound.

Mix by weight, one part epoxy to one part hardener and stir thoroughly for 4 minutes. Cure for 2 hours at 65° Celsius and raise temperature to 120° Celsius for an additional 2 hours.

DESCRIPTION	QUANTITY	PART NO.	PRICE
Epoxy Kit	1 oz. Kit	HCE10	XXXX



Miscellaneous Mounting Supplies

DESCRIPTION	TYPE	QUANTITY	PART NO.	PRICE
Sample Clips	Stainless Steel	100	SCS-1	XXXX
Sample Clips	Stainless Steel	1000	SCS-2	XXXXX
Sample Clips	Clear Plastic	100	SCP-1	XXXX
Sample Clips	Clear Plastic	1000	SCP-2	XXXXX
Glass Plates	8" X 8" X .25"	1	GP	XXXX
Stirring Sticks	Wooden	1000	SS	XXXX
Measuring and Mixing Cups graduated within 5% accuracy from 1/4 to 3 oz. And from 5 to 80 ml.	Paper	100	CUPPA-1	XXXX
		1000	CUPPA-2	XXXXX
Measuring and Mixing Cups made of polypropylene 4 oz. size, graduated in oz. & ml.	Plastic - Reusable	20	CUPPL-1	XXXX

Mounting Molds

DESCRIPTION	TYPE	QUANTITY	PART NO.	PRICE
Plastic Sample Cup	1.00"	12	PSC-1	XXXX
Plastic Sample Cup	1.25"	12	PSC-2	XXXX
Plastic Sample Cup	1.50"	12	PSC-3	XXXX
Rubber Sample Cup	1.00"	5	RSC-1	XXXX
Rubber Sample Cup	1.25"	5	RSC-2	XXXX
Rubber Sample Cup	1.50"	5	RSC-3	XXXX
Rubber Sample Cup	2.00"	5	RSC-4	XXXXX
Rubber Sample Cup	3.00"	1	RSC-5	XXXX

Ring Forms

DESCRIPTION	TYPE	QUANTITY	PART NO.	PRICE
Phenolic	1.00" OD	10	RF1-1	XXX
Phenolic	1.00" OD	100	RF1-2	XXXX
Phenolic	1.25" OD	10	RF2-1	XXX
Phenolic	1.25" OD	100	RF2-2	XXXX
Phenolic	1.50" OD	10	RF3-1	XXX
Phenolic	1.50" OD	100	RF3-2	XXXX

Abrasive Discs

SiC, C-Weight, Wet/Dry, Metallurgical Paper



HUDSON Abrasive Discs are fabricated with high quality C weight paper. These products are competitively priced and offer our customers the best solution in the marketplace. Please note that other sizes, hole diameters, and grit sizes are available. The grit sizes listed are USA standards.

A European (FEPA P-Grade) Comparison chart is provided on the inside cover of this catalog.

Plain Back

DISC SIZE	GRIT	PART NO.	PRICE/100
8" PLAIN BACK	60	8PD60X	XXXX
	80	8PD80X	XXXX
	120	8PD120X	XXXX
	180	8PD180X	XXXX
	240	8PD240X	XXXX
	320	8PD320X	XXXX
	400	8PD400X	XXXX
	600	8PD600X	XXXX
	800/(2400P)	8PD800	XXXX
	1000/(3000P)	8PD1000	XXXX
1200/(4000P)	8PD1200	XXXX	
8" x 1/2" PLAIN BACK	60	8PD60-1X	XXXX
	80	8PD80-1X	XXXX
	120	8PD120-1X	XXXX
	180	8PD180-1X	XXXX
	240	8PD240-1X	XXXX
	320	8PD320-1X	XXXX
	400	8PD400-1X	XXXX
	600	8PD600-1X	XXXX
	800/(2400P)	8PD800-1	XXXX
	2000/(3000P)	8PD1000-1	XXXX
1200/(4000P)	8PD1200-1	XXXX	
10" PLAIN BACK	60	10PD60X	XXXXX
	80	10PD80X	XXXX
	120	10PD120X	XXXX
	180	10PD180X	XXXX
	240	10PD240X	XXXX
	320	10PD320X	XXXX
	400	10PD400X	XXXX
	600	10PD600X	XXXX
	800/(2400P)	10PD800	XXXX
	1000/(3000P)	10PD1000	XXXX
1200/(4000P)	10PD1200	XXXX	

PSA Back (Pressure Sensitive Adhesive)

DISC SIZE	GRIT	PART NO.	PRICE/100
8" PSA BACK	60	8PDA60X	XXXX
	80	8PDA80X	XXXX
	120	8PDA120X	XXXX
	180	8PDA180X	XXXX
	240	8PDA240X	XXXX
	320	8PDA320X	XXXX
	400	8PDA400X	XXXX
	600	8PDA600X	XXXX
	800/(2400P)	8PDA800	XXXX
	1000/(3000P)	8PDA1000	XXXX
1200/(4000P)	8PDA1200	XXXX	
8" x 2-1/2" PSA BACK	60	8PDA60-1X	XXXX
	80	8PDA80-1X	XXXX
	120	8PDA120-1X	XXXX
	180	8PDA180-1X	XXXX
	240	8PDA240-1X	XXXX
	320	8PDA320-1X	XXXX
	400	8PDA400-1X	XXXX
	600	8PDA600-1X	XXXX
	800/(2400P)	8PDA800-1	XXXX
	1000/(3000P)	8PDA1000-1	XXXX
1200/(4000P)	8PDA1200-1	XXXX	
10" PSA BACK	60	10PDA60X	XXXXX
	80	10PDA80X	XXXXX
	120	10PDA120X	XXXXX
	180	10PDA180X	XXXXX
	240	10PDA240X	XXXXX
	320	10PDA320X	XXXXX
	400	10PDA400X	XXXXX
	600	10PDA600X	XXXXX
	800/(2400P)	10PDA800	XXXXX
	1000/(3000P)	10PDA1000	XXXXX
1200/(4000P)	10PDA1200	XXXXX	

SiC, C-Weight, Wet/Dry Metallurgical Paper

Plain Back

DISC SIZE	GRIT	PART NO.	PRICE/100
12" PLAIN BACK	60	12PD60X	XXXXX
	80	12PD80X	XXXXX
	120	12PD120X	XXXX
	180	12PD180X	XXXX
	240	12PD240X	XXXX
	320	12PD320X	XXXX
	400	12PD400X	XXXX
	600	12PD600X	XXXX
	800/(2400P)	12PD800	XXXXX
	1000/(3000P)	12PD1000	XXXXX
1200/(4000P)	12PD1200	XXXXX	
14" PLAIN BACK	60	14PD60X	XXXXX
	80	14PD80X	XXXXX
	120	14PD120X	XXXXX
	180	14PD180X	XXXXX
	240	14PD240X	XXXXX
	320	14PD320X	XXXXX
	400	14PD400X	XXXXX
	600	14PD600X	XXXXX
	800/(2400P)	14PD800	XXXXX
	1000/(3000P)	14PD1000	XXXXX
1200/(4000P)	14PD1200	XXXXX	
250mm PLAIN BACK	60	250PD60X	XXXXX
	80	250PD80X	XXXX
	120	250PD120X	XXXX
	180	250PD180X	XXXX
	240	250PD240X	XXXX
	320	250PD320X	XXXX
	400	250PD400X	XXXX
	600	250PD600X	XXXX
	800/(2400P)	250PD800	XXXX
	1000/(3000P)	250PD1000	XXXX
1200/(4000P)	250PD1200	XXXX	

HUDSON Adhesive Remover

PART NO.	QUANTITY	PRICE
ADRE	1 Quart	XXXX
ADRE1	1 Gallon	XXXX

PSA Back (Pressure Sensitive Adhesive)

DISC SIZE	GRIT	PART NO.	PRICE/100
12" PSA BACK	60	12PDA60X	XXXXX
	80	12PDA80X	XXXXX
	120	12PDA120X	XXXXX
	180	12PDA180X	XXXXX
	240	12PDA240X	XXXXX
	320	12PDA320X	XXXXX
	400	12PDA400X	XXXXX
	600	12PDA600X	XXXXX
	800/(2400P)	12PDA800	XXXXX
	1000/(3000P)	12PDA1000	XXXXX
1200/(4000P)	12PDA1200	XXXXX	
14" PSA BACK	60	14PDA60X	XXXXX
	80	14PDA80X	XXXXX
	120	14PDA120X	XXXXX
	180	14PDA180X	XXXXX
	240	14PDA240X	XXXXX
	320	14PDA320X	XXXXX
	400	14PDA400X	XXXXX
	600	14PDA600X	XXXXX
	800/(2400P)	14PDA800X	XXXXX
	1000/(3000P)	14PDA1000	XXXXX
1200/(4000P)	14PDA1200	XXXXX	

Grit Grabbers

Double sided adhesive film for converting plain back paper discs into PSA back discs.

DIAMETER	PART NO.	PRICE/EACH 10/PACK
8"	8GG	XXX
8"	8GGX*	XXX
9"	9GG	XXX
10"	10GG	XXX
10"	10GGX*	XXX
12"	12GG	XXX
12"	12GGX*	XXX
14"	14GG	XXX
16"	16GG	XXX

* X denotes Super Heavy Duty Adhesive

Strips, Rolls, Sheets and Belts



PSA Strips: 3" x 11"
SiC, C-Weight, Wet/Dry
Metallurgical Paper

GRIT	3" x 11" Strips PART NO.	PRICE/100
180	3STA180	XXXX
240	3STA240	XXXX
320	3STA320	XXXX
400	3STA400	XXXX
600	3STA600	XXXX



Rolls:
SiC, C-Weight, Wet/Dry Metallurgical Paper

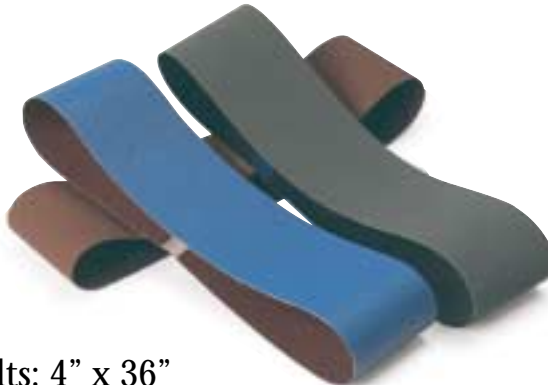
All rolls are wrapped around 1/2" paper cores, except 4" rolls which are wrapped around 3-3/8" diameter plastic spools with 1" center holes.

GRIT	3" x 75' Rolls		3-7/16" x 75' Rolls		4" x 150' Rolls	
	PART NO.	PRICE/EACH	PART NO.	PRICE/EACH	PART NO.	PRICE/EACH
180	3RL180	XXXX	3716RL180	XXXX	4RL180	XXXX
240	3RL240	XXXX	3716RL240	XXXX	4RL240	XXXX
320	3RL320	XXXX	3716RL320	XXXX	4RL320	XXXX
400	3RL400	XXXX	3716RL400	XXXX	4RL400	XXXX
600	3RL600	XXXX	3716RL600	XXXX	4RL600	XXXX



Sheets: 9" x 11"
SiC, C-Weight, Wet/Dry
Metallurgical Paper

GRIT	9" x 11" Sheets PART NO.	PRICE/100
60	9PS60C	XXXX
80	9PS80C	XXXX
120	9PS120C	XXXX
180	9PS180C	XXXX
240	9PS240C	XXXX
320	9PS320C	XXXX
400	9PS400C	XXXX
600	9PS600C	XXXX



Belts: 4" x 36"
Wet/Dry, Resin Bond Abrasive Cloth Belts

GRIT	ALUMINUM OXIDE		SILICON CARBIDE		ZIRCONIA ALUMINA	
	PART NO.	PRICE EACH 10/PACK	PART NO.	PRICE EACH 10/PACK	PART NO.	PRICE EACH 10/PACK
40	4B36G40M1	XXX	4B36G40M2	XXX	4B36G40M18	XXX
60	4B36G60M1	XXX	4B36G60M2	XXX	4B36G60M18	XXX
80	4B36G80M1	XXX	4B36G80M2	XXX	4B36G80M18	XXX
100	-	-	-	-	4B36G100M18	XXX
120	4B36G120M1	XXX	4B36G120M2	XXX	4B36G120M18	XXX
180	4B36G180M1	XXX	4B36G180M2	XXX		
240	4B36G240M1	XXX	4B36G240M2	XXX		
320	4B36G320M1	XXX	4B36G320M2	XXX		
400	4B36G400M1	XXX	4B36G400M2	XXX		
600	4B36G600M1	XXX	4B36G600M2	XXX		

We also offer Aluminum Oxide, Ceramic and Zirconia Alumina Cloth Discs.

Diamond Products

Diamond Discs—Metal Bond

HUDSON Diamond Discs consist of a steel backing with sharp, blocky diamond particles electroformed into the disc. The bonding system utilizes a special hard nickel alloy which rigidly locks the diamond particles into the disc to provide fast cutting of all hard materials. The sharp edges cut cleanly with no edge rounding. Please call us to discuss your application, as most discs are a special order.

Diamond Discs

8" x NH, Full Coat

SIZE	BACKING	PART NO.	PRICE
50 Grit	Plain	DMD800	XXXXX
	PSA	DMD810	XXXXX
100 Grit	Plain	DMD801	XXXXX
	PSA	DMD811	XXXXX
220 Grit	Plain	DMD802	XXXXX
	PSA	DMD812	XXXXX
280 Grit 45 Micron	Plain	DMD803	XXXXX
	PSA	DMD813	XXXXX
30 Micron	Plain	DMD804	XXXXX
	PSA	DMD814	XXXXX
15 Micron	Plain	DMD805	XXXXX
	PSA	DMD815	XXXXX

Grain Size Conversions

USA GRIT SIZES	FEPA EUROPEAN P-SERIES	NOMINAL GRAIN DIAMETER MICRONS
60	60	260
80	80	200
120	120	125
150	—	93
180	180	76
220	—	68
—	220	58
240	280	52
—	320	46
280	360	39
320	400	35
—	500	30
360	600	26
400	800	22
—	1000	18
600	1200	14
800	2400	10
1000	3000	7
1200	4000	5
	3	
	1	
	.05	
	.03	
	0.25	
	0.1	
	0.05	

Lapping Films



HUDSON Lapping Films are an ultra fine, uniformly coated abrasive films for use in lapping and polishing operations. They have applications in the metal, ceramic, electronic, and lapidary fields. These films are ideally suited for use on flat lapping surfaces where slurries of fine abrasives are used. The coatings are extremely dense and may be used wet or dry. They are available in Aluminum Oxide and Diamond.

Diamond Lapping Film

Plain Back

SIZE	PKG QTY	PART NO.	.1 - .15M PRICE/EA	30M PRICE/EA	45M PRICE/EA
5" x NH	3	AF030-*	XXXX	XXXX	XXXX
8" x NH	2	AF060-*	XXXX	XXXX	XXXX
12" x NH	1	AF120-*	XXXX	XXXX	XXXXX
3" x 6"	4	AF190-*	XXX	XXXX	XXXX
3" x 8"	3	AF220-*	XXXX	XXXX	XXXX
6" x 6"	2	AF230-*	XXXX	XXXX	XXXX
9" x 11"	1	AF260-*	XXXX	XXXX	XXXX

PSA Back (Pressure Sensitive Adhesive)

SIZE	PKG QTY	PART NO.	.1 - .15M PRICE/EA	30M PRICE/EA	45M PRICE/EA
4" x NH	4	AF290-*	XXX	XXXX	XXXX
8" x NH	2	AF320-*	XXXX	XXXX	XXXX
12" x NH	1	AF350-*	XXXX	XXXX	XXXXX
3" x 6"	4	AF380-*	XXX	XXXX	XXXX
3" x 8"	3	AF410-*	XXXX	XXXX	XXXX
9" x 11"	1	AF440-*	XXXX	XXXX	XXXX

* For example the correct part number for a 5" X NH, 1 micron, diamond plain back is **AF030-01**. Refer to chart below.

Add the following numbers listed below to specify the desired diamond micron size:

Available Micron Sizes:	Add to Part No.	Color
0.1	-20	Lt. Tan
0.5	-70	Opaque White
1-	-01	Violet
3	-03	Pink
6	-06	Brown

Available Micron Sizes:	Add to Part No.	Color
9	-09	Blue
12	-12	Yellow
15	-15	Orange
30	-30	Lime Green
45	-45	Lt. Tan

Aluminum Oxide Lapping Film

Plain Back

SIZE	PKG QTY	.05 - 60M PART NO.	PRICE/PKG
5" x NH	100	AF010-**	XXXX
8" x NH		AF040-**	XXXXX
9" x NH		AF070-**	XXXXX
12" x NH		AF100-**	XXXXX
14" x NH		AF130-**	XXXXX
16" x NH	50	AF150-**	XXXXX
3" x 6"	100	AF170-**	XXXXX
3" x 8"		AF200-**	XXXX
9" x 11"		AF240-**	XXXXX

PSA Back (Pressure Sensitive Adhesive)

SIZE	PKG QTY	.05 - 60M PART NO.	PRICE/PKG
4" x NH	200	AF270-**	XXXX
8" x NH	100	AF300-**	XXXXX
12" x NH		AF330-**	XXXXX
3" x 6"		AF360-**	XXXX
3" x 8"		AF390-**	XXXX
9" x 11"		AF420-**	XXXXX

** For example the correct part number for a 5" x NH 1 micron, aluminum oxide plain back is **AF010-01**. Refer to chart below.

Prices good for all micron sizes.

Add the following numbers listed below to specify the desired aluminum oxide micron size:

Available Micron Sizes:	Add to Part No.	Color
-05	-10	Pale Yellow
.1	-20	White
.3	-50	White
.5	-70	Yellow
1	-01	Violet
2	-02	Aqua
3	-03	Pink

Available Micron Sizes:	Add to Part No.	Color
5	-05	Tan
9	-09	Blue
12	-12	Yellow
15	-15	Orange
30	-30	Lime Green
40	-40	Bright Blue
60	-60	Tan

Abrasive Powders and Suspensions



HUDSON offers a variety of abrasive powders which may be mixed with distilled water to create various consistencies based on your desired mix ratios.

Alumina Powders (1 Lb. Jars)

Agglomerate Free

MICRON	QUANTITY	PART NO.	PRICE/EA
0.05	1	AP05AF	XXXX
	5		XXXX
0.3	1	AP3AF	XXXX
	5		XXXX
1	1	AP1AF	XXXX
	5		XXXX

Aluminum Oxide Powders

HUDSON aluminum oxide powders are levigated. They are used for grinding and rough to final polishing. Recommended for final polishing of ceramics and refractories.

PER 1 POUND			PER 5 POUNDS		
MICRON	PART NO.	PRICE	MICRON	PART NO.	PRICE
3.0	A0P10	XXXX	3.0	A0P5-10	XXXX
5.0	A0P15	XXXX	5.0	A0P5-15	XXXX

Slurry

MICRON	SIZE: 6 OZ.		SIZE: 1 GALLON	
	PART NO.	PRICE	PART NO.	PRICE
.05	AS056	XXXX	AS056-1	XXXXX
0.3	AS36	XXXX	AS36-1	XXXXX
1	AS16	XXXX	AS16-1	XXXXX
5 Micron Levigated	AS56	XXXX	AS56-1	XXXXX

HUDPOLISH

Colloidal Alumina .5 Micron

Colloidal Alumina is an acidic suspension. Its chemical-mechanical action provides superior surfaces on germanium, silicon, arsenides, zinc sulfide, zinc selenide, fluorides, sapphire, ferrites, and silicon carbide. Low scatter finishes can be obtained on pure metals such as nickel, tungsten, copper, beryllium and also on steel and aluminum.

Epoxy resin materials and plastics are successfully polished with this versatile colloidal suspension. Properties- pH3 to 3.5, 20% solids, Viscosity: thixotropic.

SIZE	PART NO.	PRICE
1 quart	CA-30	XXXX
1 gallon	CA-40	XXXXX

Colloidal Alumina/Silica

Colloidal Alumina/Silica is a final medium polish which is used as a mechanochemical polishing action to achieve superior finishes. This suspension produces exceptional removal rates and finishes by reacting chemically with the surface of ceramic materials to allow the abrasive particles to cut more efficiently. Colloidal Alumina/Silica may be used on aluminum, glass sapphire, silicon nitride, and metal/ceramic composites. Properties - pH: 9

SIZE	PART NO.	PRICE
1 gallon	CAS-40	XXXXX

Colloidal Silica .05 Micron

Colloidal Silica is an alkaline suspension that eliminates problems caused by drying or freezing associated with other colloidal silica products used for chemical/mechanical polishing. It is the premier silica dispersion for optimizing surface finishes on oxides, metals, semi-conductors, and ceramic based materials such as silicon, fused silica, lithium niobate, YAG, sapphire, etc. Its small particle size and aggressive chemical/mechanical polishing action is capable of producing very fine finishes. Properties - pH: 9.6 to 9.9, 40% Solids, Viscosity: 20 to 40 cp.

SIZE	PART NO.	PRICE
1 quart	CS05-30	XXXX
1 gallon	CS05-40	XXXX

Diamond Compounds



HUDSON Diamond Compounds are a superior quality synthetic product precisely graded to meet your most demanding applications. Our standard carrier is water/oil soluble. In addition, other special products not listed, such as natural diamond are available. For your special requests, please call customer service.

Applications: see chart on page 19

5 Gram Tubes Medium Concentration

Monocrystalline Synthetic

MICRON	PART NO.	PRICE
0.25	5DC025M	XXXX
0.50	5DC050M	XXXX
1	5DC1M	XXXX
3	5DC3M	XXXX
6	5DC6M	XXXX
9	5DC9M	XXXX
15	5DC15M	XXXX
30	5DC30M	XXXX
45	5DC45M	XXXX

Polycrystalline Synthetic

MICRON	PART NO.	PRICE
0.25	5DCP025M	XXXX
0.50	5DCP050M	XXXX
1	5DCP1M	XXXX
3	5DCP3M	XXXX
6	5DCP6M	XXXX
9	5DCP9M	XXXX
15	5DCP15M	XXXX
30	5DCP30M	XXXX
45	5DCP45M	XXXX

5 Gram Tubes Heavy Concentration

Monocrystalline Synthetic

MICRON	PART NO.	PRICE
0.25	5DC025H	XXXX
0.50	5DC050H	XXXX
1	5DC1H	XXXX
3	5DC3H	XXXX
6	5DC6H	XXXX
9	5DC9H	XXXX
15	5DC15H	XXXX
30	5DC30H	XXXX
45	5DC45H	XXXX

Polycrystalline Synthetic

MICRON	PART NO.	PRICE
0.25	5DCP025H	XXXX
0.50	5DCP050H	XXXX
1	5DCP1H	XXXX
3	5DCP3H	XXXX
6	5DCP6H	XXXX
9	5DCP9H	XXXX
15	5DCP15H	XXXX
30	5DCP30H	XXXX
45	5DCP45H	XXXX

18 Gram Tubes Medium Concentration

Monocrystalline Synthetic

MICRON	COLOR	PART NO.	PRICE
0.25	White	18DCO25M	XXXX
0.50	White	18DCO50M	XXXX
1	White	18DC1M	XXXX
3	Yellow	18DC3M	XXXX
6	Orange	18DC6M	XXXX
9	Green	18DC9M	XXXX
15	Blue	18DC15M	XXXX
30	Red	18DC30M	XXXXX
45	Brown	18DC45M	XXXXX

Polycrystalline Synthetic

MICRON	COLOR	PART NO.	PRICE
0.25	Dark Gray	18DCPO25M	XXXXX
0.50	Dark Gray	18DCPO50M	XXXXX
1	Dark Gray	18DCP1M	XXXXX
3	Dark Gray	18DCP3M	XXXXX
6	Dark Gray	18DCP6M	XXXXX
9	Dark Gray	18DCP9M	XXXXX
15	Dark Gray	18DCP15M	XXXXX
30	Dark Gray	18DCP30M	XXXXX
45	Dark Gray	18DCP45M	XXXXX

18 Gram Tubes Heavy Concentration

Monocrystalline Synthetic

MICRON	COLOR	PART NO.	PRICE
0.25	White	18DCO25H	XXXX
0.50	White	18DCO50H	XXXX
1	White	18DC1H	XXXX
3	Yellow	18DC3H	XXXX
6	Orange	18DC6H	XXXXX
9	Green	18DC9H	XXXXX
15	Blue	18DC15H	XXXXX
30	Red	18DC30H	XXXXX
45	Brown	18DC45H	XXXXX

Polycrystalline Synthetic

MICRON	COLOR	PART NO.	PRICE
0.25	Dark Gray	18DCP025H	XXXXX
0.05	Dark Gray	18DCP050H	XXXXX
1	Dark Gray	18DCP1H	XXXXX
3	Dark Gray	18DCP3H	XXXXX
6	Dark Gray	18DCP6H	XXXXX
9	Dark Gray	18DCP9H	XXXXX
15	Dark Gray	18DCP15H	XXXXX
30	Dark Gray	18DCP30H	XXXXX
45	Dark Gray	18DCP45H	XXXXX

Diamond Extenders & Diamond Sprays



Applications

APPLICATION	MICRON
Ultimate Finish For Work Requiring Highest Precision Polishing	0.1
	0.25
	0.5
High Precision Polish	1
Final Finish For Most Materials	3
	6
Intermediate Grinding	9
	15
Rough Grinding	30
	45

HUDEXTEND

Extender Lubricant (pink)

All purpose alcohol based lubricant for high cutting rates of all materials. Low viscosity.

SIZE	PART NO.	PRICE
1 pint	DE-2	XXX
1 quart	DE-2Q	XXXX
1 gallon	DE-2G	XXXX

HUDOIL

Extender Lubricant (red)

Designed for diamond polishing of soft materials. Higher viscosity than HUDLUBE™.

SIZE	PART NO.	PRICE
1 pint	DE	XXX
1 quart	DE-1Q	XXXX
1 gallon	DE-1G	XXXX

HUDLUBE

Extender Lubricant (yellow)

A general lubricant for most materials. Higher viscosity than HUDEXTEND™. Water soluble.

SIZE	PART NO.	PRICE
1 pint	DE-3	XXX
1 quart	DE-3Q	XXXX
1 gallon	DE-3G	XXXX



Right Angle Spray

Medium concentration.

5 oz. Traditional aerosol can, Monocrystalline Synthetic Diamond. **No Air Shipments.**

MICRON	PART NO.	PRICE
0.25	DS025	XXXX
0.50	DS050	XXXX
1	DS1	XXXXX
3	DS3	XXXX
6	DS6	XXXX
9	DS9	XXXX
15	DS15	XXXX
30	DS30	XXXX
45	DS45	XXXX



Inverted Spray

Medium concentration.

5 oz. Inverted spray aerosol can, Monocrystalline Synthetic Diamond. **No Air Shipments.**

MICRON	PART NO.	PRICE
0.25	DSI025	XXXX
1	DSI1	XXXX
3	DSI3	XXXX
6	DSI6	XXXX
9	DSI9	XXXX
15	DSI15	XXXX
30	DSI30	XXXX
45	DSI45	XXXX



Non-Aerosol Pump Spray

Heavy concentration.

8 oz. Manual right angle adjustable pump, monocrystalline synthetic diamond.

MICRON	COLOR	PART NO.	PRICE
0.25	White	DSP025	XXXX
0.50	White	DSP050	XXXX
1	White	DSP1	XXXX
3	Yellow	DSP3	XXXX
6	Orange	DSP6	XXXX
9	Green	DSP9	XXXX
15	Blue	DSP15	XXXX
30	Red	DSP30	XXXX
45	Brown	DSP45	XXXX

Diamond Suspensions

Diamond Suspensions

500ml Squeeze Bottle.

Your choice of non-colored monocrystalline, colored monocrystalline, or dark gray polycrystalline synthetic diamond.



Monocrystalline

NON-COLORED/WHITE		
MICRON	PART NO.	PRICE
0.25	DSU025	XXXX
0.50	DSU050	XXXX
1	DSU1	XXXX
3	DSU3	XXXX
6	DSU6	XXXX
9	DSU9	XXXX
15	DSU15	XXXX
30	DSU30	XXXX
45	DSU45	XXXX

Monocrystalline

COLORED			
MICRON	COLOR	PART NO.	PRICE
0.25	White	DSU0251	XXXX
0.50	White	DSU0501	XXXX
1	White	DSU11	XXXX
3	Yellow	DSU31	XXXX
6	Orange	DSU61	XXXX
9	Green	DSU91	XXXX
15	Blue	DSU151	XXXX
30	Red	DSU301	XXXX
45	Brown	DSU451	XXXX

Polycrystalline

DARK GRAY			
MICRON	COLOR	PART NO.	PRICE
0.25	Dark Gray	DSU0252	XXXX
0.50	Dark Gray	DSU0502	XXXX
1	Dark Gray	DSU12	XXXX
3	Dark Gray	DSU32	XXXX
6	Dark Gray	DSU62	XXXX
9	Dark Gray	DSU92	XXXX
15	Dark Gray	DSU152	XXXX
30	Dark Gray	DSU302	XXXX
45	Dark Gray	DSU452	XXXX



Monocrystalline Diamond

200 Milliliters in Non-Aerosol Pump Bottle.

Monocrystalline diamond is made of a single crystal structure, very blocky and strong. This type of diamond provides a high removal rate and is best used for all-purpose grinding and polishing.

MICRON	COLOR	CONCENTRATION	PART NO.	PRICE
1	Colorless	Heavy	DSP11-1	XXXX
3	Yellow	Heavy	DSP31-1	XXXX
6	Orange	Heavy	DSP61-1	XXXX
9	Green	Heavy	DSP91-1	XXXX
15	Blue	Heavy	DSP151-1	XXXX



Polycrystalline Diamond

200 Milliliters in Non-Aerosol Pump Bottle.

Polycrystalline diamond is made of multi-faceted crystallites. This type of diamond has a high removal rate with minimal scratch depth. Polycrystalline diamonds are recommended for the most exacting standards.

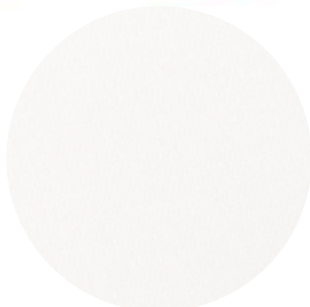
MICRON	COLOR	CONCENTRATION	PART NO.	PRICE
1	Dark Gray	Heavy	DSP12-1	XXXX
3	Dark Gray	Heavy	DSP32-1	XXXX
6	Dark Gray	Heavy	DSP62-1	XXXX
9	Dark Gray	Heavy	DSP92-1	XXXX
15	Dark Gray	Heavy	DSP152-1	XXXX



GRINDING/POLISHING

Polishing Cloths

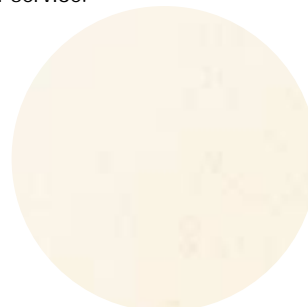
A wide variety of Polishing Cloths are available from HUDSON in PSA Back (pressure sensitive adhesive) and Plain Back. They are arranged below from hardest to softest. If you need further assistance choosing the appropriate polishing cloth for your application, please call customer service.



Nylon PC-7

Tightly woven nylon napless cloth used with medium diamond polishing. Excellent for maintaining flatness.

SIZE	BACKING	PART NO.	PRICE/10 PK
8" x NH	PSA BACK	8PC7A	XXXX
8" x 2-1/2"		8PC7A-1	XXXX
12" x NH"		12PC7A	XXXX
14" x NH		14PC7A	XXXX
16" x NH		16PC7A	XXXXX
10" x NH	PLAIN BACK	10PC7	XXXX
14" x NH		14PC7	XXXX
16" x NH		16PC7	XXXXX



Creamcloth PC-1

Non-woven napless chemotextile material that is widely used for rough and fine diamond polishing.

SIZE	BACKING	PART NO.	PRICE/10 PK
8" x NH	PSA BACK	8PC1A	XXXX
8" x 2-1/2"		8PC1A-1	XXXX
10" x NH		10PC1A	XXXX
12" x NH		12PC1A	XXXX
14" x NH		14PC1A	XXXX
16" x NH		16PC1A	XXXXX



White Label PC-23

Woven napless rayon with plastic film backing. It provides excellent flatness and edge retention.

SIZE	BACKING	PART NO.	PRICE/10 PK
8" x NH	PSA BACK	8PC23A	XXXX
8" x 2-1/2"		8PC23A-1	XXXX
10" x NH		10PC23A	XXXX
12" x NH		12PC23A	XXXX
14" x NH		14PC23A	XXXX
16" x NH		16PC23A	XXXXX

* Price per 10 unless otherwise indicated.



Cotton PC-3

Tightly woven cotton used for rough and fine polishing with diamond or alumina.

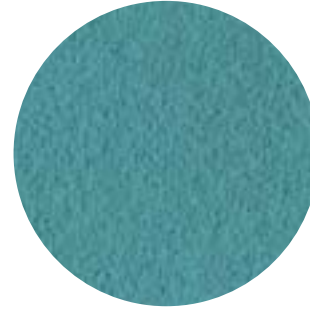
SIZE	BACKING	PART NO.	PRICE/10 PK
10" x NH	PLAIN BACK	10PC3	XXXX
14" x NH		14PC3	XXXX



Canvas PC-19

100% cotton and used with rough diamond coarse alumina or silicon carbide powders.

SIZE	BACKING	PART NO.	PRICE/10 PK
10" x NH	PLAIN BACK	10PC19	XXXXXX
14" x NH		14PC19	XXXX
16" x NH		16PC19	XXXX

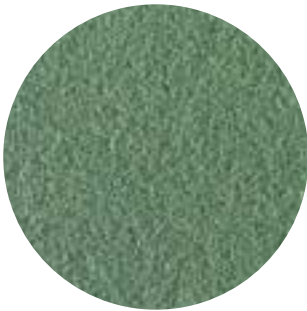


Billiard Cloth PC-14

100% virgin wool used with medium or fine diamond or coarse aluminas. Excellent for ferrous materials.

Also recommended for lapidary operations.

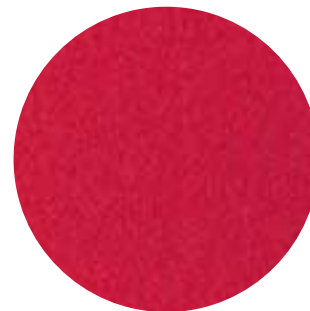
SIZE	BACKING	PART NO.	PRICE/10 PK
8" x NH	PSA BACK	8PC14A	XXXX
8" x 2-1/2"		8PC14A-1	XXXX
10" x NH		10PC14A	XXXX
12" x NH		12PC14A	XXXX
14" x NH		14PC14A	XXXXX
16" x NH"		16PC14A	XXXXX
10" x NH	PLAIN BACK	10PC14	XXXX
14" x NH		14PC14	XXXXX
16" x NH		16PC14	XXXXX



Greensuede PC-27

Used for polishing all materials with diamond.

SIZE	BACKING	PART NO.	PRICE/10 PK
8" x NH	PSA BACK	8PC27A	XXXX
8" x 2-1/2"		8PC27A-1	XXXX
10" x NH		10PC27A	XXXX
12" x NH		12PC27A	XXXX
14" x NH		14PC27A	XXXX
16" x NH		16PC27A	XXXXX
10" x NH	PLAIN BACK	10PC27	XXXX
14" x NH		14PC27	XXXX
16" x NH		16PC27	XXXX



Red Felt PC-11

100% virgin wool tightly woven cloth that is extremely durable and strong. It is used for rough and final polishing with diamond or alumina. Excellent for ferrous materials.

SIZE	BACKING	PART NO.	PRICE/10 PK
8" x NH	PSA BACK	8PC11A	XXXX
8" x 2-1/2"		8PC11A-1	XXXX
12" x NH		12PC11A	XXXXX
14" x NH		14PC11A	XXXXX
16" x NH		16PC11A	XXXXX
10" x NH		PLAIN BACK	10PC11
14" x NH	14PC11		XXXXX



Dura cloth PC-26

Used for final polishing of hard materials like glass with Cerium Oxide.

SIZE	BACKING	PART NO.	PRICE/10 PK
8" x NH	PSA BACK	8PC26A	XXXX
8" x 2-1/2"		8PC26A-1	XXXX
10" x NH		10PC26A	XXXX
12" x NH		12PC26A	XXXXX
14" x NH		14PC26A	XXXXX
16" x NH		16PC26A	XXXXX
10" x NH	PLAIN BACK	10PC26	XXXX
14" x NH		14PC26	XXXXX
16" x NH		16PC26	XXXXX



White Royal PC-17

Synthetic rayon velvet cloth with a short nap. Excellent for final diamond or alumina polishing.

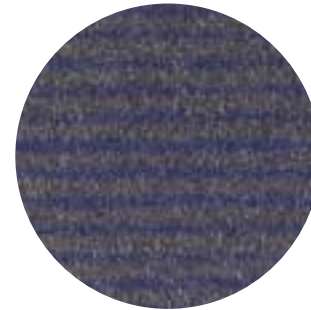
SIZE	BACKING	PART NO.	PRICE/10 PK
8" x NH	PSA BACK	8PC17A	XXXX
8" x 2-1/2"		8PC17A-1	XXXX
10" x NH		10PC17A	XXXX
12" x NH		12PC17A	XXXX
14" x NH		14PC17A	XXXX
16" x NH		16PC17A	XXXXX



Kitty Ear PC-22

All wool, short nap cloth used with fine alumina. Good for general purpose final polishing.

SIZE	BACKING	PART NO.	PRICE/10 PK
8" x NH	PSA BACK	8PC22A	XXXX
8" x 2-1/2"		8PC22A-1	XXXX
10" x NH		10PC22A	XXXX
12" x NH		12PC22A	XXXX
14" x NH		14PC22A	XXXX
16" x NH		16PC22A	XXXXX
10" x NH	PLAIN BACK	10PC22	XXXX
14" x NH		14PC22	XXXX
16" x NH		16PC22	XXXXX



Bluegrey Line PC-13

100% woven wool. Excellent for diamond polishing of hard materials. Examples: metals, glass, and fiber optics.

SIZE	BACKING	PART NO.	PRICE/10 PK
8" x NH	PSA BACK	8PC13A	XXXX
8" x 2 1/2"		8PC13A-1	XXXX
10" x NH		10PC13A	XXXX
12" x NH		12PC13A	XXXXX
14" x NH		14PC13A	XXXXX
16" x NH		16PC13A	XXXXX
10" x NH	PLAIN BACK	10PC13	XXXXX
14" x NH		14PC13	XXXXX
16" x NH		16PC13	XXXXX



Our Most
Popular!

HUDCLOTH PC-5

Synthetic rayon short nap cloth for fine diamond, alumina, or colloidal silica.

SIZE	BACKING	PART NO.	PRICE/10 PK
8" x NH	PSA BACK	8PC5A	XXXX
8" x 2 1/2"		8PC5A-1	XXXX
10" x NH		10PC5A	XXXX
12" x NH		12PC5A	XXXX
14" x NH		14PC5A	XXXX
16" x NH		16PC5A	XXXX
10" x NH	PLAIN BACK	10PC5	XXXX
14" x NH		14PC5	XXXX
16" x NH		16PC5	XXXX



Final Finsh PC-6

Rayon flock on a cotton canvas backing. Recommended for fine diamond, alumina, colloidal silica, or cerium oxide polishing.

SIZE	BACKING	PART NO.	PRICE/10 PK
8" x NH	PSA BACK	8PC6A	XXXXX
8" x 2-1/2"		8PC6A-1	XXXXX
12" x NH		12PC6A	XXXXX



Selvyt PC-10

Medium nap cloth excellent for fine diamond polishing of metals and ceramics.

SIZE	BACKING	PART NO.	PRICE/10 PK
10" x NH	PLAIN BACK	10PC10	XXXX
14" x NH		14PC10	XXXX
16" x NH		16PC10	XXXX

Film & Film Holders



Please call customer service for any Polaroid® product not listed.

Polaroid® Film

4X5 Sheet Bulk - 20 Exposures per Box - 10 boxes per Case

PART NO.	DESCRIPTION	PRICE PER BOX	PRICE PER CASE
615957	Type 52	XXXX	XXXXX
613255	Type 53	XXXX	XXXXX
618155	PP400/Type 72	XXXX	XXXXX
617097	PP100/Type 54	XXXX	XXXXX
617098	Type 55	XXXX	XXXXX
617096	Type 59	XXXX	XXXXX
617998	PC100/Type 79	XXXX	XXXXX
616886	Type 64T	XXXX	XXXXX

BW Pack - 20 Exposures Per Box - 25 Boxes Per Case

PART NO.	DESCRIPTION	PRICE PER BOX	PRICE PER CASE
617799	Type 667	XXXX	XXXXX
619662	Type 664	XXXX	XXXXX
617582	Type 611	XXXX	XXXXX
623817	Type 87	XXXX	XXXXX

Color Pack - 20 Exposures Per Box - 25 Boxes Per Case

PART NO.	DESCRIPTION	PRICE PER BOX	PRICE PER CASE
619534	ProVivid 689	\$18.00	XXXXX
625297	Type 679	\$34.00	XXXXX
625860	Type 64T	\$35.00	XXXXX
623960	Type 669	\$34.00	XXXXX
625854	Type PCID	\$34.00	XXXXX
625859	Type 681	\$36.00	XXXXX
625850	Type 108	\$18.00	XXXXX
625851	Type 108	\$34.00	XXXXX
623959	Type 88	\$17.00	XXXXX

Grid Film Twins - 20 Exposures Per Box - 30 Boxes Per Case

PART NO.	DESCRIPTION	PRICE PER BOX	PRICE PER CASE
617792	Grid Twins	\$31.00	XXXXX

Integral Film Twins - 10 Exposures Per Box - 30 Boxes Per Case

PART NO.	DESCRIPTION	PRICE PER BOX	PRICE PER CASE
623965	Type 779	XXXX	XXXXX

Integral Film Twins - 20 Exposures Per Box - 30 Boxes Per Case

PART NO.	DESCRIPTION	PRICE PER BOX	PRICE PER CASE
624242	Spectra/Type 990	XXXX	XXXXX
617577	SX70/Type O	XXXX	XXXXX

Autofilm - 20 Exposures Per Box - 30 Boxes Per Case

PART NO.	DESCRIPTION	PRICE PER BOX	PRICE PER CASE
614534	Type 331	XXXX	XXXXX
607286	Type 339	XXXX	XXXXX
629952	Type 339PLUS	XXXX	XXXXX
614656	Type 337	XXXX	XXXXX

Polaroid® Film Holders

FILM TYPE	PART NO.	DESCRIPTION	PRICE
4"x 5" Sheet	617878	Model 545i	XXXXX
4"x 5" Sheet	100072	545 Pro	XXXXX
4"x 5" Pack	604030	Model 550	XXXXX
3-1/4" x 4-1/4"	607951	Model 405	XXXXX

Polaroid® Camera

TYPE	PART NO.	DESCRIPTION	PRICE
990 Spectra	619758	Macro 5 SLR	XXXXX

The Macro 5 SLR Camera is a complete compact camera system for generating instant close-up photographs. With its unique ranging system, you can document work instantly, in color, at the touch of a button. The Macro 5 system produces crisp, self-developing prints in seconds using Polaroid® Spectra High Definition and Type 990 films.

Miscellaneous Items

Pillar Testing Files

Pillar Testing Files for hardness testing. These files are popular among manufacturers of taps, drill bits, reamers, ball bearings, gears, etc. They are intended for testing, not for filing off stock. These Swiss Pattern Files are fabricated out of high carbon tool steel.



SIZE	CUT	PART NO.	PRICE EACH 12/PACK
6"	0	TF60	XXX
6"	1	TF61	XXX
8"	0	TF80	XXXX
8"	1	TF81	XXXX
8"	2	TF82	XXXX

* The higher the cut number, the finer the cut.



Latex Gloves

Light Powdered Glove. 100 per box

SIZE	PART NO.	PRICE
Medium	GLEX102	XXXX
Large	GLEX103	XXXX
X-Large	GLEX104	XXXX

Hardness Test Blocks, Ball Penetrators, Diamond Indentors

For your convenience we are now supplying an entire line of hardness test blocks, ball penetrators and diamond indentors.

We have included a small sample of available products.

Please call for more information.

B Scale Test Blocks

C Scale Test Blocks

SCALE & NOMINAL			SCALE & NOMINAL		
PART NO.	HARDNESS VALUE	PRICE	PART NO.	HARDNESS VALUE	PRICE
9202-010	RBO	XXXXX	9203-111	RC25	XXXX
9202-020	RB10	XXXXX	9203-121	RC30	XXXX
9202-030	RB20	XXXX	9203-131	RC35	XXXX
9202-040	RB30	XXXX	9203-141	RC40	XXXX
9202-050	RB40	XXXX	9203-151	RC45	XXXX
9202-060	RB50	XXXX	9203-161	RC50	XXXX
9202-070	RB60	XXXX	9203-171	RC55	XXXX
9202-080	RB70	XXXX	9203-181	RC60	XXXX
9202-090	RB80	XXXX	9203-191	RC63	XXXX
9202-100	RB95	XXXX	9203-201	RC65	XXXX
			9203-211	RC70	XXXX

Beakers & Cylinders

DESCRIPTION	QUANTITY	PART NO.	PRICE
250ML Graduated Beaker	12 per case	250MLBEAKER	XXXX
250ML Graduated Cylinder	2 per pack	250MLCYLINDER	XXXX
250ML Graduated Cylinder	12 per case	250MLCYLINDER-1	XXXXX

Heavy Duty Ultra Sonic Cleaning Solution

SIZE	PART NO.	PRICE
1 pint	USC-1	XXX
1 gallon	USC-2	XXXX

Chemicals & Solutions

TYPE/SIZE	PART NO.	PRICE
Buffer Solution PH10 Pint	BSPH10	XXXX
Buffer Solution PH4 Pint	BSPH4	XXXX
Bromophenol Blue 0.1% ETHANOL	B202-LITER	XXXX
Hydrochloric Acid 0.5N N/2 4 LITER	H180-4LITER	XXXX
Methyl Orange 0.01% Aqueous	M188-500ML	XXXX
Phenolphthalin Indicator 4 Liter	P163-4LITER	XXXX
Potassium Permanganate 1.0N 4 Liter	P500-4LITER	XXXX
Sodium Hydroxide 0.1N 4 Liter	S390-4LITER	XXXX
Sodium Hydroxide 0.1N 4 Liter	S465-41LITER	XXXX
Sulfuric Acid .0N 4 Liter	S660-4LITER	XXXX

HUDSON™

Competitively priced, quality.

HUDSON™

An Affiliate of Lawrence Industries, Inc.

4500 Lee Road
Cleveland, Ohio 44128-2959

BULK RATE
U.S. Postage
PAID
Permit No. 3097
Cleveland, OH

Do Not Throw Away!

This catalog will save your company money. Please route to the person in charge of selecting consumable lab supplies.

- [Met Lab/Chem Lab](#)
- [Heat Treating](#)
- [Quality Control](#)
- [Purchasing](#)

(216) 518-3000 (800) 486-0480 Fax: (216) 518-9665 www.hudsonsupply.com