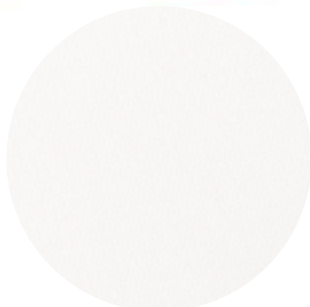




GRINDING/POLISHING

Polishing Cloths

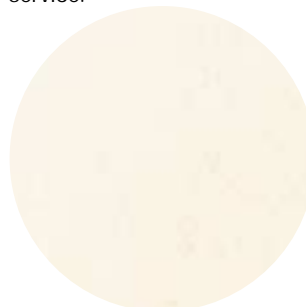
A wide variety of Polishing Cloths are available from HUDSON in PSA Back (pressure sensitive adhesive) and Plain Back. They are arranged below from hardest to softest. If you need further assistance choosing the appropriate polishing cloth for your application, please call customer service.



Nylon PC-7

Tightly woven nylon napless cloth used with medium diamond polishing. Excellent for maintaining flatness.

SIZE	BACKING	PART NO.	PRICE/10 PK
8" x NH	PSA BACK	8PC7A	XXXX
8" x 2-1/2"		8PC7A-1	XXXX
12" x NH"		12PC7A	XXXX
14" x NH		14PC7A	XXXX
16" x NH		16PC7A	XXXXX
10" x NH	PLAIN BACK	10PC7	XXXX
14" x NH		14PC7	XXXX
16" x NH		16PC7	XXXXX



Creamcloth PC-1

Non-woven napless chemotextile material that is widely used for rough and fine diamond polishing.

SIZE	BACKING	PART NO.	PRICE/10 PK
8" x NH	PSA BACK	8PC1A	XXXX
8" x 2-1/2"		8PC1A-1	XXXX
10" x NH		10PC1A	XXXX
12" x NH		12PC1A	XXXX
14" x NH		14PC1A	XXXX
16" x NH		16PC1A	XXXXX



White Label PC-23

Woven napless rayon with plastic film backing. It provides excellent flatness and edge retention.

SIZE	BACKING	PART NO.	PRICE/10 PK
8" x NH	PSA BACK	8PC23A	XXXX
8" x 2-1/2"		8PC23A-1	XXXX
10" x NH		10PC23A	XXXX
12" x NH		12PC23A	XXXX
14" x NH		14PC23A	XXXX
16" x NH		16PC23A	XXXXX

* Price per 10 unless otherwise indicated.



Cotton PC-3

Tightly woven cotton used for rough and fine polishing with diamond or alumina.

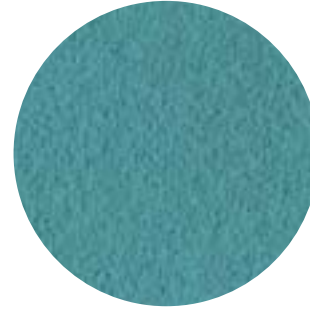
SIZE	BACKING	PART NO.	PRICE/10 PK
10" x NH	PLAIN BACK	10PC3	XXXX
14" x NH		14PC3	XXXX



Canvas PC-19

100% cotton and used with rough diamond coarse alumina or silicon carbide powders.

SIZE	BACKING	PART NO.	PRICE/10 PK
10" x NH	PLAIN BACK	10PC19	XXXXXX
14" x NH		14PC19	XXXX
16" x NH		16PC19	XXXX

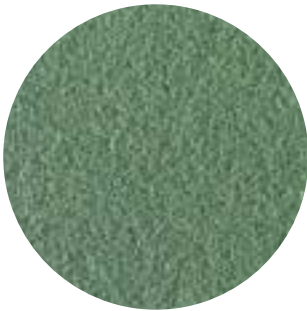


Billiard Cloth PC-14

100% virgin wool used with medium or fine diamond or coarse aluminas. Excellent for ferrous materials.

Also recommended for lapidary operations.

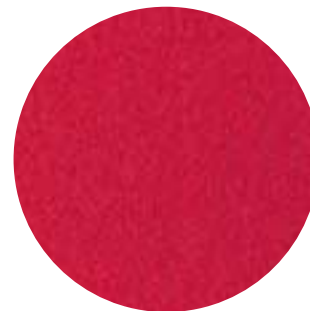
SIZE	BACKING	PART NO.	PRICE/10 PK
8" x NH	PSA BACK	8PC14A	XXXX
8" x 2-1/2"		8PC14A-1	XXXX
10" x NH		10PC14A	XXXX
12" x NH		12PC14A	XXXX
14" x NH		14PC14A	XXXXX
16" x NH"		16PC14A	XXXXX
10" x NH	PLAIN BACK	10PC14	XXXX
14" x NH		14PC14	XXXXX
16" x NH		16PC14	XXXXX



Greensuede PC-27

Used for polishing all materials with diamond.

SIZE	BACKING	PART NO.	PRICE/10 PK
8" x NH	PSA BACK	8PC27A	XXXX
8" x 2-1/2"		8PC27A-1	XXXX
10" x NH		10PC27A	XXXX
12" x NH		12PC27A	XXXX
14" x NH		14PC27A	XXXX
16" x NH		16PC27A	XXXXX
10" x NH	PLAIN BACK	10PC27	XXXX
14" x NH		14PC27	XXXX
16" x NH		16PC27	XXXX



Red Felt PC-11

100% virgin wool tightly woven cloth that is extremely durable and strong. It is used for rough and final polishing with diamond or alumina. Excellent for ferrous materials.

SIZE	BACKING	PART NO.	PRICE/10 PK
8" x NH	PSA BACK	8PC11A	XXXX
8" x 2-1/2"		8PC11A-1	XXXX
12" x NH		12PC11A	XXXXX
14" x NH		14PC11A	XXXXX
16" x NH		16PC11A	XXXXX
10" x NH		PLAIN BACK	10PC11
14" x NH	14PC11		XXXXX



Dura cloth PC-26

Used for final polishing of hard materials like glass with Cerium Oxide.

SIZE	BACKING	PART NO.	PRICE/10 PK
8" x NH	PSA BACK	8PC26A	XXXX
8" x 2-1/2"		8PC26A-1	XXXX
10" x NH		10PC26A	XXXX
12" x NH		12PC26A	XXXXX
14" x NH		14PC26A	XXXXX
16" x NH		16PC26A	XXXXX
10" x NH	PLAIN BACK	10PC26	XXXX
14" x NH		14PC26	XXXXX
16" x NH		16PC26	XXXXX



White Royal PC-17

Synthetic rayon velvet cloth with a short nap. Excellent for final diamond or alumina polishing.

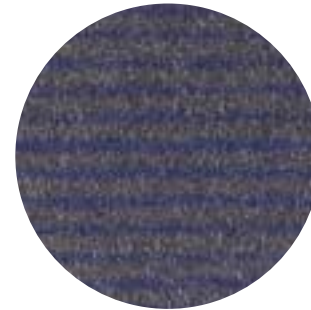
SIZE	BACKING	PART NO.	PRICE/10 PK
8" x NH	PSA BACK	8PC17A	XXXX
8" x 2-1/2"		8PC17A-1	XXXX
10" x NH		10PC17A	XXXX
12" x NH		12PC17A	XXXX
14" x NH		14PC17A	XXXX
16" x NH		16PC17A	XXXXX



Kitty Ear PC-22

All wool, short nap cloth used with fine alumina. Good for general purpose final polishing.

SIZE	BACKING	PART NO.	PRICE/10 PK
8" x NH	PSA BACK	8PC22A	XXXX
8" x 2-1/2"		8PC22A-1	XXXX
10" x NH		10PC22A	XXXX
12" x NH		12PC22A	XXXX
14" x NH		14PC22A	XXXX
16" x NH		16PC22A	XXXXX
10" x NH	PLAIN BACK	10PC22	XXXX
14" x NH		14PC22	XXXX
16" x NH		16PC22	XXXXX



Bluegrey Line PC-13

100% woven wool. Excellent for diamond polishing of hard materials. Examples: metals, glass, and fiber optics.

SIZE	BACKING	PART NO.	PRICE/10 PK
8" x NH	PSA BACK	8PC13A	XXXX
8" x 2 1/2"		8PC13A-1	XXXX
10" x NH		10PC13A	XXXX
12" x NH		12PC13A	XXXXX
14" x NH		14PC13A	XXXXX
16" x NH		16PC13A	XXXXX
10" x NH	PLAIN BACK	10PC13	XXXXX
14" x NH		14PC13	XXXXX
16" x NH		16PC13	XXXXX



Our Most Popular!

HUDCLOTH PC-5

Synthetic rayon short nap cloth for fine diamond, alumina, or colloidal silica.

SIZE	BACKING	PART NO.	PRICE/10 PK
8" x NH	PSA BACK	8PC5A	XXXX
8" x 2 1/2"		8PC5A-1	XXXX
10" x NH		10PC5A	XXXX
12" x NH		12PC5A	XXXX
14" x NH		14PC5A	XXXX
16" x NH		16PC5A	XXXX
10" x NH	PLAIN BACK	10PC5	XXXX
14" x NH		14PC5	XXXX
16" x NH		16PC5	XXXX



Final Finsh PC-6

Rayon flock on a cotton canvas backing. Recommended for fine diamond, alumina, colloidal silica, or cerium oxide polishing.

SIZE	BACKING	PART NO.	PRICE/10 PK
8" x NH	PSA BACK	8PC6A	XXXXX
8" x 2-1/2"		8PC6A-1	XXXXX
12" x NH		12PC6A	XXXXX



Selvyt PC-10

Medium nap cloth excellent for fine diamond polishing of metals and ceramics.

SIZE	BACKING	PART NO.	PRICE/10 PK
10" x NH	PLAIN BACK	10PC10	XXXX
14" x NH		14PC10	XXXX
16" x NH		16PC10	XXXX